

Reducer flange is used to mount a larger diaphragm seal to a smaller process connection. This type of reducer flange is clamped between process nozzle and diaphragm seal. Eccentric reducer flanges can be supplied to prevent process media remaining in the reducer ring when mounted in vertical position. The reducer flange can be combined with the BF and BRF seal as well as the BC and BRC type.


STANDARD EXECUTION

BODY	GASKET SURFACE FINISH	FACING	TYPE
AISI 316(L)	Ra 3.2-6.3 µm	RF	type B1

FLUSH CONNECTION

1/4"NPT

FLANGED PROCESS CONNECTIONS
ASME B16.5

process	seal	rating	facing
1"	3"	cl. 150	RF
1"	3"	cl. 300	RF
1"	3"	cl. 400 - cl. 600	RF
1"	3"	cl. 900 - cl. 1500	RF
1"	3"	cl. 2500	RF
2"	3"	cl. 150	RF
2"	3"	cl. 300	RF
2"	3"	cl. 400 - cl. 600	RF
2"	3"	cl. 900 - cl. 1500	RF
2"	3"	cl. 2500	RF

EN 1092-1

process	seal	rating	type
DN25	DN80	PN10-40	B1
DN25	DN80	PN63	B1
DN25	DN80	PN100	B1
DN50	DN80	PN10-40	B1
DN50	DN80	PN63	B1
DN50	DN80	PN100	B1

FLUSHING CONNECTIONS

size	thread	norms
1/4"	NPT	ANSI B1.20.1
1/4"	BSP	ISO 228
1/2"	NPT	ANSI B1.20.1
1/2"	BSP	ISO 228

BODY MATERIALS, AND FACING OPTIONS

body material
AISI 316(L)
AISI 304(L)
AISI 321
Hastelloy C-276
Monel 400
Duplex
Super Duplex
Inconel 600

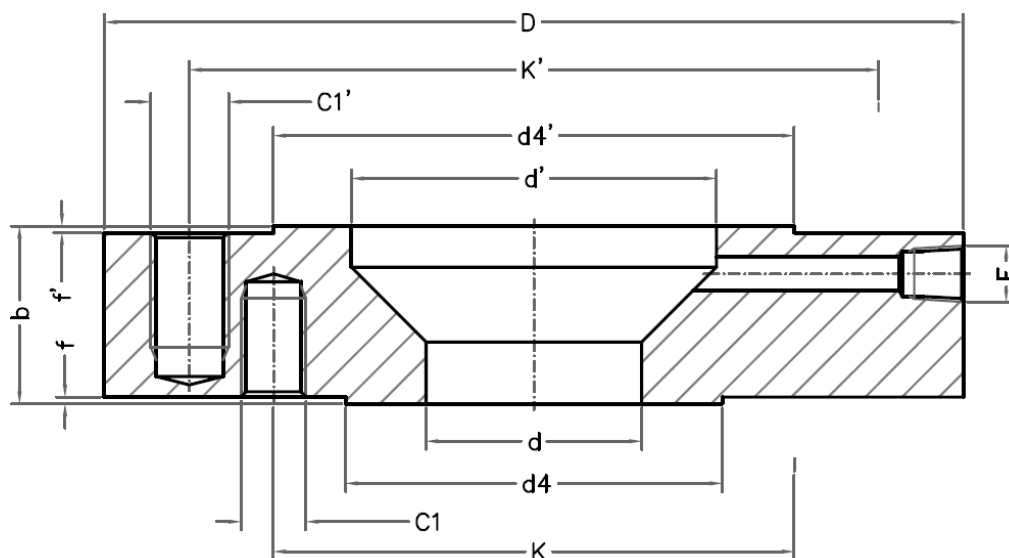
facing (ASME B16.5)	
RF	Ra 3.2-6.3 µm
RJF	Ra <1.6 µm
LMF	Ra 3.2-6.3 µm
SMF	Ra <3.2 µm
FF	Ra 3.2-6.3 µm
LTF	Ra <3.2 µm
STF	Ra <3.2 µm
LGF	Ra <3.2 µm
SGF	Ra <3.2 µm
LFF	Ra 3.2-6.3 µm
SFF	Ra <3.2 µm

facing type (EN 1092-1)	
B1	Ra 3.2-12.5 µm
A	Ra 3.2-12.5 µm
B2	Ra 0.8-3.2 µm
C	Ra 0.8-3.2 µm
D	Ra 0.8-3.2 µm
E	Ra 3.2-12.5 µm
F	Ra 3.2-12.5 µm
G	Ra 0.8-3.2 µm
H	Ra 0.8-3.2 µm

OPTIONS

- eccentric execution
- vent & blind plugs
- valves BDTV910
- set of handles welded on side of flange

DRAWING AND DIMENSIONS STANDARD EXECUTIONS



ASME B16.5 - RF FACING

process	seal	rating	facing	b	f	f'	D	K	K'	d4	d4'	d	d'	C1	C1'
1"	3"	cl. 150	RF	40	2	2	190	80	152	51	127	27	101	1/2" UNC	5/8" UNC
1"	3"	cl. 300	RF	47	2	2	210	89	168	51	127	27	101	5/8" UNC	3/4" UNC
1"	3"	cl. 400 - cl. 600	RF	47	7	7	210	89	168	51	127	27	101	5/8" UNC	3/4" UNC
1"	3"	cl. 900	RF	74	7	7	240	102	191	51	127	27	93	7/8" UNC	7/8" UNC
1"	3"	cl. 1500	RF	74	7	7	265	102	203	51	127	27	93	7/8" UNC	1 1/8" UNC
1"	3"	cl. 2500	RF	90	7	7	305	108	229	51	127	27	93	7/8" UNC	1 1/4" UNC
2"	3"	cl. 150	RF	40	2	2	190	121	152	92	127	53	101	5/8" UNC	5/8" UNC
2"	3"	cl. 300	RF	47	2	2	210	127	168	92	127	53	101	5/8" UNC	3/4" UNC
2"	3"	cl. 400 - cl. 600	RF	47	7	7	210	127	168	92	127	53	101	5/8" UNC	3/4" UNC
2"	3"	cl. 900	RF	74	7	7	240	165	191	92	127	53	93	7/8" UNC	7/8" UNC
2"	3"	cl. 1500	RF	74	7	7	265	165	203	92	127	53	93	7/8" UNC	1 1/8" UNC
2"	3"	cl. 2500	RF	90	7	7	305	171	229	92	127	53	93	1" UNC	1 1/4" UNC

All dimensions in mm



Holland – United Kingdom – Romania – India – Thailand – Dubai – USA

To our knowledge, the information contained herein is accurate as of the date of this document. However neither Badotherm, nor its affiliates makes any warranty, express or limited, or accepts any liability in connection with this information or its use. This information is for technical skilled persons at their own discretion and risk and does not relate to the use of this product in combination with any other product. The user alone finally determines suitability of any information or material in contemplated use, the manner of use and whether any patents are infringed. This information gives typical properties only.

Badotherm reserves the right to make changes to the specifications and materials without prior notice. The latest version of the datasheet can be found on www.badotherm.com.

© 2001 Badotherm, all rights reserved. Trademarks and/or other products referenced herein are either trademarks or registered trademarks of Badotherm.