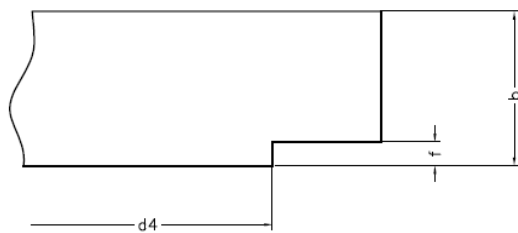


Pressure Rating PN10-16

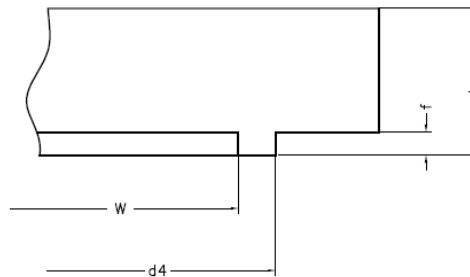
Process Connection size		DN15	DN20	DN25	DN40	DN50	DN80	DN100
Outside diameter flange	O	95	105	115	150	165	200	220
Minimum thickness incl facing	b	16	18	18	18	18	20	20
Facing height Type B, D, F	f	2	2	2	3	3	3	3
Facing height Type C, E	f	4.5	4.5	4.5	4.5	4.5	4.5	5
Outside diameter facing Type B, D, F	d4	45	58	68	88	102	138	158
Outside diameter Tongue/Spigot Type C, E	d4	39	50	57	75	87	120	149
Outside diameter groove/recess Type D, F	Y	40	51	58	76	88	121	150
Inside diameter groove Type D	Z	28	35	42	60	72	105	128
Inside diameter Tongue Type C	W	29	36	43	61	73	106	129
diameter bolt circle		65	75	85	110	125	160	180
# bolt holes		4	4	4	4	4	8	8
size bolt holes		14	14	14	18	18	18	18

All dimensions are a reference to the EN 1092-1
All dimensions in mm

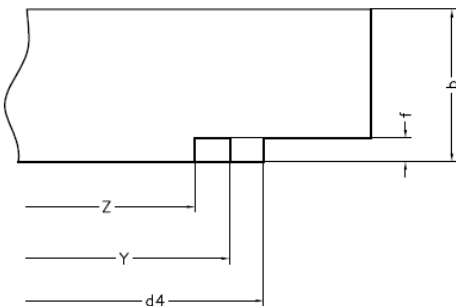
Type B, Type E



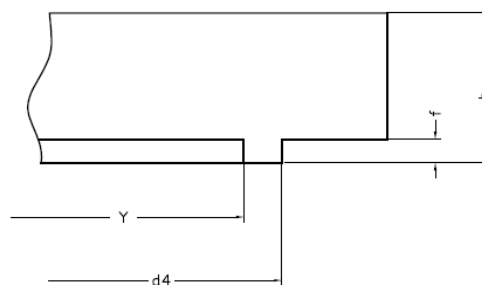
Type C



Type D



Type F

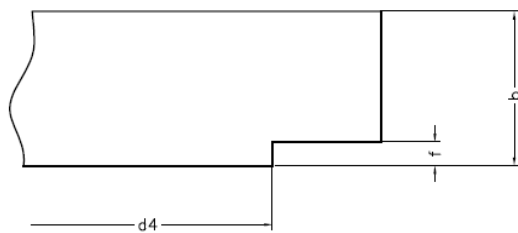


Pressure Rating PN25-40

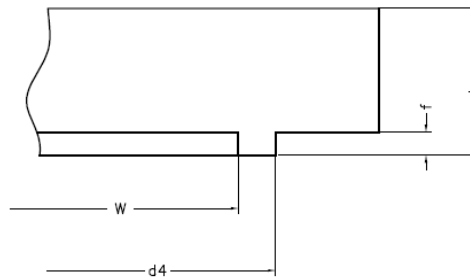
Process Connection size		DN15	DN20	DN25	DN40	DN50	DN80	DN100
Outside diameter flange	O	95	105	115	150	165	200	220
Minimum thickness incl facing	b	16	18	18	18	20	24	24
Facing height Type B, D, F	f	2	2	2	3	3	3	3
Facing height Type C, E	f	4.5	4.5	4.5	4.5	4.5	4.5	5
Outside diameter facing Type B, D, F	d4	45	58	68	88	102	138	162
Outside diameter Tongue/Spigot Type C, E	d4	39	50	57	75	87	120	149
Outside diameter groove/recess Type D, F	Y	40	51	58	76	88	121	150
Inside diameter groove Type D	Z	28	35	42	60	72	105	128
Inside diameter Tongue Type C	W	29	36	43	61	73	106	129
diameter bolt circle		65	75	85	110	125	160	190
# bolt holes		4	4	4	4	4	8	8
size bolt holes		14	14	14	18	18	18	22

All dimensions are a reference to the EN 1092-1
All dimensions in mm

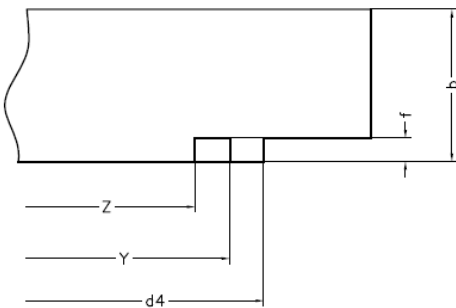
Type B, Type E



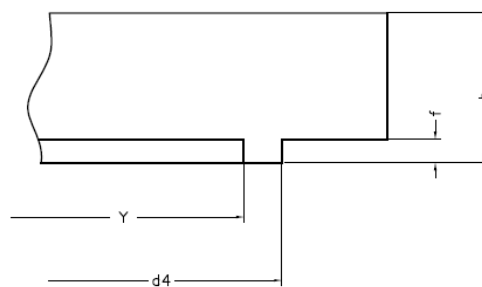
Type C



Type D



Type F

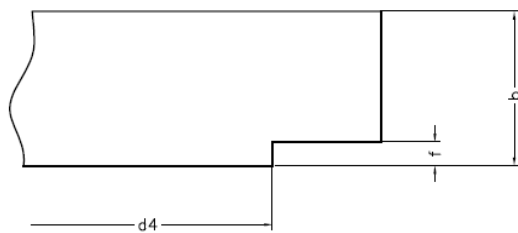


Pressure Rating PN63

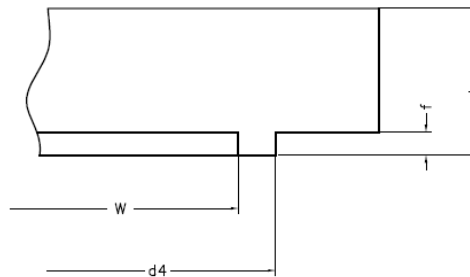
Process Connection size		DN15	DN20	DN25	DN40	DN50	DN80	DN100
Outside diameter flange	O	105	130	140	170	180	215	250
Minimum thickness incl facing	b	20	22	24	26	26	28	30
Facing height Type B, D, F	f	2	2	2	3	3	3	3
Facing height Type C, E	f	4.5	4.5	4.5	4.5	4.5	4.5	5
Outside diameter facing Type B, D, F	d4	45	58	68	88	102	138	162
Outside diameter Tongue/Spigot Type C, E	d4	39	50	57	75	87	120	149
Outside diameter groove/recess Type D, F	Y	40	51	58	76	88	121	150
Inside diameter groove Type D	Z	28	35	42	60	72	105	128
Inside diameter Tongue Type C	W	29	36	43	61	73	106	129
diameter bolt circle		75	90	100	125	135	170	200
# bolt holes		4	4	4	4	4	8	8
size bolt holes		14	18	18	22	22	22	26

All dimensions are a reference to the EN 1092-1
All dimensions in mm

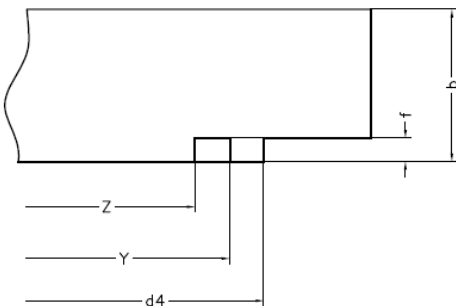
Type B, Type E



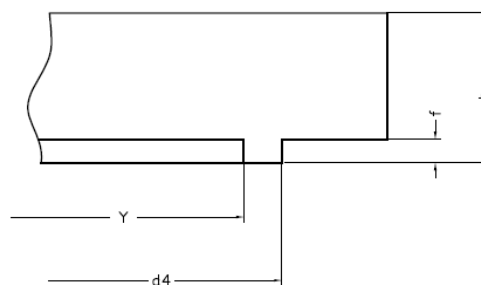
Type C



Type D



Type F

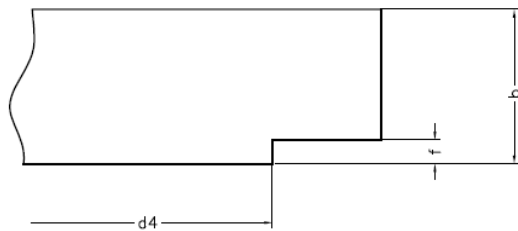


Pressure Rating PN100

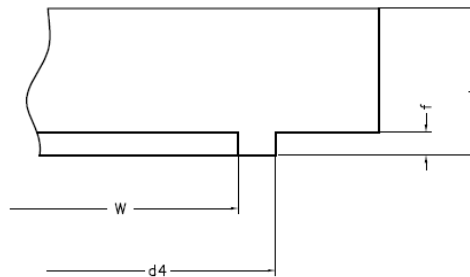
Process Connection size		DN15	DN20	DN25	DN40	DN50	DN80	DN100
Outside diameter flange	O	105	130	140	170	195	230	265
Minimum thickness incl facing	b	20	22	24	26	28	32	36
Facing height Type B, D, F	f	2	2	2	3	3	3	3
Facing height Type C, E	f	4.5	4.5	4.5	4.5	4.5	4.5	5
Outside diameter facing Type B, D, F	d4	45	58	68	88	102	138	162
Outside diameter Tongue/Spigot Type C, E	d4	39	50	57	75	87	120	149
Outside diameter groove/recess Type D, F	Y	40	51	58	76	88	121	150
Inside diameter groove Type D	Z	28	35	42	60	72	105	128
Inside diameter Tongue Type C	W	29	36	43	61	73	106	129
diameter bolt circle		75	90	100	125	145	180	210
# bolt holes		4	4	4	4	4	8	8
size bolt holes		14	18	18	22	26	26	30

All dimensions are a reference to the EN 1092-1
All dimensions in mm

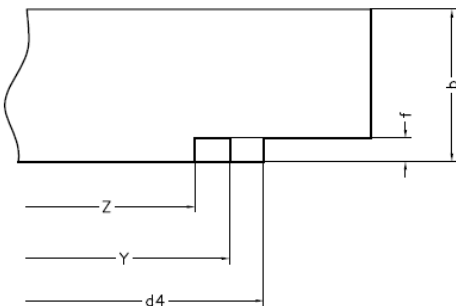
Type B, Type E



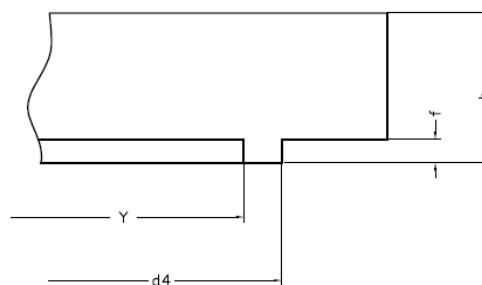
Type C



Type D



Type F





Holland – United Kingdom – Romania – India – Thailand – Dubai – USA

To our knowledge, the information contained herein is accurate as of the date of this document. However neither Badotherm, nor its affiliates makes any warranty, express or limited, or accepts any liability in connection with this information or its use. This information is for technical skilled persons at their own discretion and risk and does not relate to the use of this product in combination with any other product. The user alone finally determines suitability of any information or material in contemplated use, the manner of use and whether any patents are infringed. This information gives typical properties only.

Badotherm reserves the right to make changes to the specifications and materials without prior notice. The latest version of the datasheet can be found on www.badotherm.com.

© 2001 Badotherm, all rights reserved. Trademarks and/or other products referenced herein are either trademarks or registered trademarks of Badotherm.