

The FSO-BRF construction is designed to obtain a diaphragm seal with full wetted parts in exotic materials. With Badotherm's unique resistance weld technology, a stainless steel body (non-wetted) has its wetted parts (diaphragm and raised face portion) covered by sheet material in the required exotic material. This is far more economic than producing the full flange in exotic material. FSO-BRF is typically used in combination with (differential) pressure transmitters for applications such as level, flow and (absolute) pressure measurement.



STANDARD EXECUTION

WETTED PARTS Hastelloy C-276	BODY AISI 316(L)	MOUNTING CONNECTION top (axial)	GASKET SURFACE FINISH factory standard
FACING RF	FACING TYPE B1	SOLUTION page 124	

FLANGED PROCESS CONNECTIONS

ASME B16.5

size	rating	facing	dD
1"	cl. 150 - cl. 2500	RF	23mm
1.5"	cl. 150 - cl. 600	RF	44mm
1.5"	cl. 900 - cl. 2500	RF	32mm
2"	cl. 150 - cl. 600	RF	57mm
2"	cl. 900 - cl. 2500	RF	44mm
3"	cl. 150 - cl. 2500	RF	81mm
4"	cl. 150 - cl. 2500	RF	81mm

EN 1092-1

size	rating	form	dD
DN25	PN10 – PN100	B1	32mm
DN40	PN10 – PN100	B1	44mm
DN50	PN10 – PN100	B1	57mm
DN80	PN10 – PN100	B1	81mm
DN100	PN10 – PN100	B1	81mm

JIS B2220

Size	rating	facing	dD
25 (1")	5K – 20K	RF	32mm
32	5K – 20K	RF	32mm
40 (1.5")	5K – 20K	RF	44mm
50 (2")	5K – 20K	RF	57mm
65	5K – 20K	RF	57mm
80 (3")	5K – 20K	RF	81mm
90	5K – 20K	RF	81mm
100 (4")	5K – 20K	RF	81mm

WETTED PARTS, BODY MATERIALS, AND FACING OPTIONS

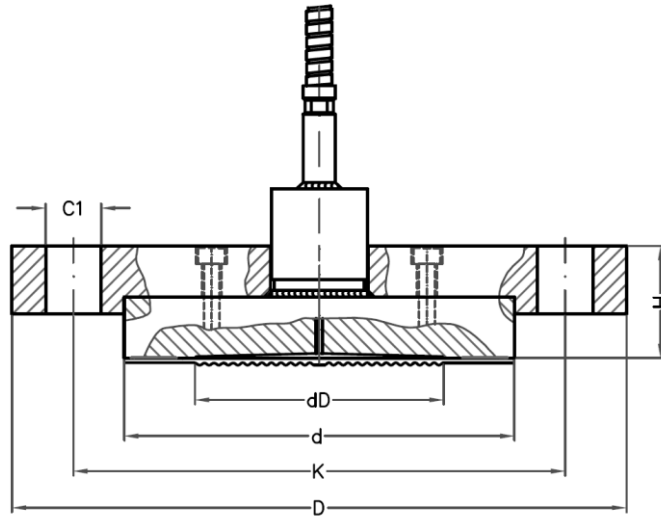
diaphragm material	body material	facing (ASME B16.5)	facing type (EN 1092-1)
Monel 400	AISI 316(L)	RF	B1
Hastelloy C-276		LMF	B2
Tantalum		SMF	E
Nickel 201			
Niobium			
AISI 304(L)			
AISI 321			
AISI 316 UG			
Duplex 2205			
Inconel 600			

Note: soft gasket to be used with all facings

OPTIONS

- set of handles welded on side of flange page 113
- heavy duty capillary tube page 113/123
- TR - temperature reducer page 114
- TC - temperature compensator page 114/121
- cover flange in exotic material
- degreasing of wetted parts

DRAWING AND DIMENSIONS STANDARD EXECUTIONS



ASME B16.5 - RF FACING

size	rating	facing	dD	H	D	d	K	C1 / pcs	C1 (inch)
1"	cl. 150	RF	23	27	110	51	80	16 / 4x	5/8"
1"	cl. 300	RF	23	30	125	51	89	19 / 4x	3/4"
1"	cl. 400-600	RF	23	32	125	51	89	19 / 4x	3/4"
1"	cl. 900-1500	RF	23	43	150	51	102	25 / 4x	1"
1"	cl. 2500	RF	23	49	160	51	108	25 / 4x	1"
1.5"	cl. 150	RF	44	30	125	73	99	16 / 4x	5/8"
1.5"	cl. 300	RF	44	33	155	73	114	22 / 4x	7/8"
1.5"	cl. 400-600	RF	44	36	155	73	114	22 / 4x	7/8"
1.5"	cl. 900-1500	RF	32	46	180	73	124	29 / 4x	1 1/8"
1.5"	cl. 2500	RF	32	59	205	73	146	32 / 4x	1 1/4"
2"	cl. 150	RF	57	32	150	92	121	19 / 4x	3/4"
2"	cl. 300	RF	57	35	165	92	127	19 / 8x	3/4"
2"	cl. 400-600	RF	57	44	165	92	127	19 / 8x	3/4"
2"	cl. 900-1500	RF	44	57	215	92	165	25 / 8x	1"
2"	cl. 2500	RF	44	64	235	92	171	29 / 8x	1 1/8"
3"	cl. 150	RF	81	36	190	127	152	19 / 4x	3/4"
3"	cl. 300	RF	81	41	210	127	168	22 / 8x	7/8"
3"	cl. 400-600	RF	81	46	210	127	168	22 / 8x	7/8"
3"	cl. 900	RF	81	52	240	127	191	25 / 8x	1"
3"	cl. 1500	RF	81	67	265	127	203	32 / 8x	1 1/4"
3"	cl. 2500	RF	81	86	305	127	229	35 / 8x	1 3/8"
4"	cl. 150	RF	81	36	230	157	191	19 / 8x	3/4"
4"	cl. 300	RF	81	44	255	157	200	22 / 8x	7/8"
4"	cl. 400	RF	81	49	255	157	200	25 / 8x	1"
4"	cl. 600	RF	81	52	275	157	216	25 / 8x	1"
4"	cl. 900	RF	81	59	290	157	235	32 / 8x	1 1/4"
4"	cl. 1500	RF	81	68	310	157	241	35 / 8x	1 3/8"
4"	cl. 2500	RF	81	90	355	157	273	42 / 8x	1 5/8"

All dimensions in mm

EN 1092-1 - TYPE B1

size	rating	type	dD	H	D	d	K	C1 / pcs
DN25	PN10-40	B1	32	30	115	68	85	14 / 4x
DN25	PN63	B1	32	36	140	68	100	18 / 4x
DN25	PN100	B1	32	36	140	68	100	18 / 4x
DN40	PN10-40	B1	44	30	150	88	110	18 / 4x
DN40	PN63	B1	44	36	170	88	125	22 / 4x
DN40	PN100	B1	44	36	170	88	125	22 / 4x
DN50	PN10-40	B1	57	32	165	102	125	18 / 4x
DN50	PN63	B1	57	38	180	102	135	22 / 4x
DN50	PN100	B1	57	40	195	102	145	26 / 4x
DN80	PN10-40	B1	81	36	200	138	160	18 / 8x
DN80	PN63	B1	81	40	215	138	170	22 / 8x
DN80	PN100	B1	81	44	230	138	180	26 / 8x
DN100	PN10-16	B1	81	44	220	158	180	18 / 8x
DN100	PN25-40	B1	81	36	235	162	190	22 / 8x
DN100	PN63	B1	81	42	250	162	200	26 / 8x

All dimensions in mm

JIS B2220 - RF FACING

size	rating	facing	dD	H	D	d	K	C1 / pcs
25	5K	RF	32	22	95	59	75	12 / 4x
25	10K	RF	32	26	125	67	90	19 / 4x
25	16K	RF	32	26	125	67	90	19 / 4x
25	20K	RF	32	28	125	67	90	19 / 4x
32	5K	RF	32	24	115	70	90	15 / 4x
32	10K	RF	32	28	135	76	100	19 / 4x
32	16K	RF	32	28	135	76	100	19 / 4x
32	20K	RF	32	30	135	76	100	19 / 4x
40	5K	RF	44	24	120	75	95	15 / 4x
40	10K	RF	44	28	140	81	105	19 / 4x
40	16K	RF	44	28	140	81	105	19 / 4x
40	20K	RF	44	30	140	81	105	19 / 4x
50	5K	RF	57	26	130	85	105	15 / 4x
50	10K	RF	57	28	155	96	120	19 / 4x
50	16K	RF	57	28	155	96	120	19 / 8x
50	20K	RF	57	30	155	96	120	19 / 8x
65	5K	RF	57	26	155	110	130	15 / 4x
65	10K	RF	57	30	175	116	140	19 / 4x
65	16K	RF	57	30	175	116	140	19 / 8x
65	20K	RF	57	32	175	116	140	19 / 8x
80	5K	RF	81	26	180	121	145	19 / 4x
80	10K	RF	81	30	185	126	150	19 / 8x
80	16K	RF	81	32	200	132	160	23 / 8x
80	20K	RF	81	34	200	132	160	23 / 8x
90	5K	RF	81	26	190	131	155	19 / 4x
90	10K	RF	81	30	195	136	160	19 / 8x
90	16K	RF	81	32	210	145	170	23 / 8x
90	20K	RF	81	36	210	145	170	23 / 8x
100	5K	RF	81	28	200	141	163	19 / 8x
100	10K	RF	81	30	210	151	175	19 / 8x
100	16K	RF	81	34	225	160	185	23 / 8x
100	20K	RF	81	38	225	160	185	23 / 8x

All dimensions in mm



Holland – United Kingdom – Romania – India – Thailand – Dubai – USA

To our knowledge, the information contained herein is accurate as of the date of this document. However neither Badotherm, nor its affiliates makes any warranty, express or limited, or accepts any liability in connection with this information or its use. This information is for technical skilled persons at their own discretion and risk and does not relate to the use of this product in combination with any other product. The user alone finally determines suitability of any information or material in contemplated use, the manner of use and whether any patents are infringed. This information gives typical properties only.

Badotherm reserves the right to make changes to the specifications and materials without prior notice. The latest version of the datasheet can be found on www.badotherm.com.

© 2001 Badotherm, all rights reserved. Trademarks and/or other products referenced herein are either trademarks or registered trademarks of Badotherm.