

The BRC construction is designed to obtain a diaphragm seal with full wetted parts in exotic materials. With Badotherm's unique resistance weld technology, a stainless steel body (non wetted), has its wetted parts (diaphragm and raised face area) covered by sheet material in the required exotic material. This is a more economical solution than producing the full body in exotic material. BRC is typically used in combination with (differential) pressure transmitters for applications such as level, flow and (absolute) pressure measurement. Its pressure rating is defined by the back-up flange mounted by the end-user, as such it can be used for all pressure ratings in RF or type B1 facing.


**STANDARD EXECUTION**

WETTED PARTS	BODY	GASKET SURFACE FINISH	MOUNTING CONNECTION
Hastelloy C-276	AISI 316(L)	factory standard	side (radial)
FACING	TYPE		
RF	type B1		

**FLANGED PROCESS CONNECTIONS**
**ASME B16.5**

size	rating	dD
1"	cl. 150 - cl. 2500	23.0mm
1.5"	cl. 150 - cl. 600	44.0mm
1.5"	cl. 900 - cl. 2500	32.0mm
2"	cl. 150 - cl. 600	57.0mm
2"	cl. 900 - cl. 2500	44.0mm
3"	cl. 150 - cl. 2500	81.0mm
4"	cl. 150 - cl. 2500	89.0mm

**EN 1092-1**

size	rating	dD
DN20	PN10 – PN400	23.0mm
DN25	PN10 – PN400	32.0mm
DN32	PN10 – PN400	32.0mm
DN40	PN10 – PN400	44.0mm
DN50	PN10 – PN400	57.0mm
DN80	PN10 – PN400	81.0mm
DN100	PN10 – PN400	89.0mm

**JIS B2220**

Size	rating	facing	dD
25 (1")	10K – 20K	RF	32.0mm
32 (1.25")	10K – 20K	RF	44.0mm
40 (1.5")	10K – 20K	RF	44.0mm
50 (2")	10K – 20K	RF	57.0mm
80 (3")	10K – 20K	RF	81.0mm
90 (3")	10K – 20K	RF	89.0mm
100 (4")	10K – 20K	RF	89.0mm

**WETTED PARTS, BODY MATERIALS, AND FACING OPTIONS**

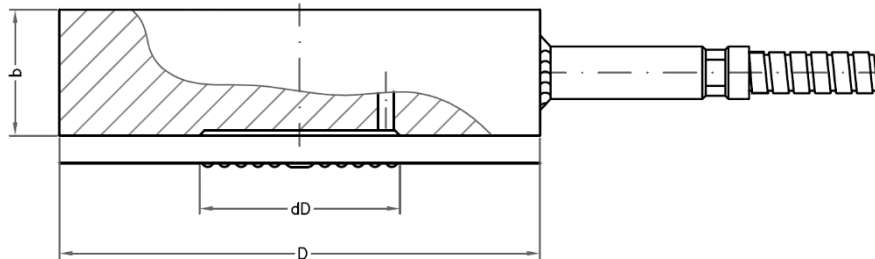
body material	Diaphragm material
AISI 316(L)	Hastelloy C-276
	254 SMO (6Mo)
	AISI 304L
	AISI 316 UG
	AISI 321
	AISI 904(L)
	Duplex 2205
	Super Duplex 2507
	Alloy 20
	Inconel 600
	Inconel 625
	Inconel 825
	Monel 400
	Nickel 201
	Niobium
	Tantalum
	Titanium Gr. 1
Zirconium 702	

facing (ASME B16.5)	facing type (EN 1092-1)
RF	B1
LMF	B2
SMF	F

Note: soft gasket to be used with all facings

**OPTIONS**

- TC - temperature compensator
- back-up / cover flange

**DRAWING AND DIMENSIONS STANDARD EXECUTIONS**

**ASME B16.5 - RF FACING**

size	rating	facing	dD	b	D
1"	cl. 150 – cl. 2500	RF	23.0	24.0	50.8
1,5"	cl. 150 – cl. 600	RF	44.0	24.0	73.0
1,5"	cl. 900 – cl. 2500	RF	32.0	24.0	73.0
2"	cl. 150 – cl. 600	RF	57.0	24.0	92.1
2"	cl. 900 – cl. 2500	RF	44.0	24.0	92.1
3"	cl. 150 – cl. 2500	RF	81.0	24.0	127.0
4"	cl. 150 – cl. 2500	RF	89.0	24.0	157.2

All dimensions in mm

**EN 1092-1 - TYPE B1**

size	rating	type	dD	b	D
DN20	PN10-400	B1	23.0	24.0	58.0
DN25	PN10-400	B1	32.0	24.0	68.0
DN32	PN10-400	B1	32.0	24.0	78.0
DN40	PN10-400	B1	44.0	24.0	88.0
DN50	PN10-400	B1	57.0	24.0	102.0
DN80	PN10-400	B1	81.0	24.0	138.0
DN100	PN10-16	B1	89.0	24.0	158.0
DN100	PN25-400	B1	89.0	24.0	162.0

All dimensions in mm

**JIS B2220**

size	rating	facing	dD	b	D
25	10K	RF	32.0	24.0	67.0
25	16-20K	RF	32.0	24.0	67.0
32	10K	RF	44.0	24.0	76.0
32	16-20K	RF	44.0	24.0	76.0
40	10K	RF	44.0	24.0	81.0
40	16-20K	RF	44.0	24.0	81.0
50	10K	RF	57.0	24.0	96.0
50	16-20K	RF	57.0	24.0	96.0
80	10K	RF	81.0	24.0	126.0
80	16-20K	RF	81.0	24.0	132.0
90	10K	RF	81.0	24.0	136.0
90	16-20K	RF	81.0	24.0	145.0
100	10K	RF	81.0	24.0	151.0
100	16-20K	RF	89.0	24.0	160.0

All dimensions in mm



Holland – United Kingdom – Romania – India – Thailand – Dubai – USA

To our knowledge, the information contained herein is accurate as of the date of this document. However neither Badotherm, nor its affiliates makes any warranty, express or limited, or accepts any liability in connection with this information or its use. This information is for technical skilled persons at their own discretion and risk and does not relate to the use of this product in combination with any other product. The user alone finally determines suitability of any information or material in contemplated use, the manner of use and whether any patents are infringed. This information gives typical properties only.

Badotherm reserves the right to make changes to the specifications and materials without prior notice. The latest version of the datasheet can be found on [www.badotherm.com](http://www.badotherm.com).

© 2015 Badotherm, all rights reserved. Trademarks and/or other products referenced herein are either trademarks or registered trademarks of Badotherm.